

THREE NEW AFFORDABLE HOMES IN HEBER CITY!!!

-Wheeler Park Subdivision-



WASATCH COUNTY
HOUSING
AUTHORITY

Buy a new home with a \$163,000 mortgage!

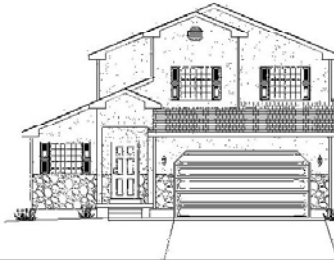
283 East 2110 South



2,108 Total Sq. Ft. (1,484 Finished)
4 Bedrooms • 2.5 Baths
.13 Acre Lot

\$215,000 Sales Price
-\$52,000 WCHA Financing
\$163,000 Mortgage Amt

295 East 2110 South



2,295 Total Sq. Ft. (1,499 Finished)
3 Bedrooms • 2.5 Baths
.13 Acre Lot

\$215,000 Sales Price
-\$52,000 WCHA Financing
\$163,000 Mortgage Amt

351 East 2110 South



2,812 Total Sq. Ft. (1,406 Finished)
3 Bedrooms • 2 Baths
.18 Acre Lot

\$225,000 Sales Price
-\$62,000 WCHA Financing
\$163,000 Mortgage Amt

Utah Housing Corporation has partnered with Wasatch County Housing Authority to construct three well-built affordable homes.

Wasatch County Housing Authority will finance an estimated \$52,000 - \$62,000 no interest/no payment loan.

Eligible buyers must qualify based on household size and gross annual income.

Quality Homes...In a Great Neighborhood!

- Unfinished Basements
- 2 Car Garages with Openers
- Central Air Conditioning
- Rock and Stucco Exteriors
- Full Sprinklers and Sod

For more information on these affordable homes or to find out if you qualify today, contact Scott Harmon at 801.902.8235 or 800.284.6950 www.utahhousingcorp.org or Gary L. McDonald at Wasatch County Housing Authority at 435.657.3337 or 801.792.7979.