



**WASATCH COUNTY
HOUSING
AUTHORITY**



Buy a \$225,000 home with a \$163,000 mortgage!

351 East 2110 South, Heber City, UT

Utah Housing Corporation has partnered with Wasatch County Housing Authority to construct a well-built affordable home.

Wasatch County Housing Authority will finance an estimated \$62,000 no interest/no payment loan.

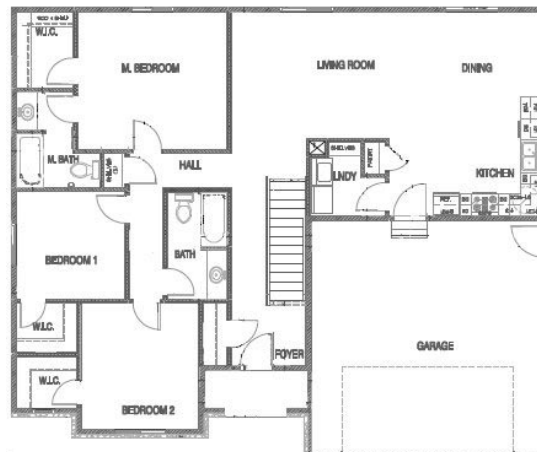
Eligible buyers must qualify based on household size and gross annual income.

Sales Price

\$225,000 - \$62,000

Est. Finance Amount of \$163,000

- 2,812 Total Sq. Ft.(1,406 Finished)
- 3 Bedrooms ○ 2 Baths
- 2 Car Garage
- .18 Acre Lot (Full Sprinklers/Sod)
- Central Air Conditioning
- Rock and Stucco Exterior



For more information on the REACH program or to find out if you qualify today, contact us at 801.902.8200 or 800.284.6950. www.utahhousingcorp.org